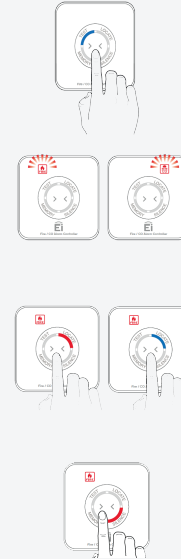


## What alarms do I have?

- ✔ Smoke & Heat alarms are present in your home as an early detection of fire.
- ✔ There are Mains/Battery powered alarms in the living and kitchen areas to be compliant with the latest legislation.
- ✔ There are CO alarms covering fuel burning appliances as well as flues passing through rooms.



## Ei450 Alarm Controller



- ✔ Test your alarms weekly by pressing the central button.
- ✔ The Fire or CO light will illuminate to show you which type of alarm has activated.
- ✔ If the alarms in your home are sounding, press to locate - this will silence all alarms except the one which activated the system.
- ✔ Silence a false alarm by again pressing the central button.

## What to do if my alarm sounds?

- ✔ In the event of an activation get your family to safety before investigating.
- ✔ In the event of a fire ensure that all windows and doors are closed if possible and evacuate the property immediately - Call the Fire Brigade.
- ✔ In the event of Carbon Monoxide, ensure that all windows & doors are open and evacuate the property immediately - Call a Gas Safe Engineer.

## Alarm Identification



- ✔ These are the entry holes visible on all Aico CO alarms.



- ✔ This is the sensor housing that you will find on Aico Heat alarms.



- ✔ These are Smoke entry vents which you will find on all Aico Smoke alarms.

Some detectors in your home may have 2 of these sensors in one package e.g. A combined Heat & CO detector or combined Heat & Optical alarm.